



Bridging Divides: Preparing doctors for the 21st century

Val Wass



“You can't stop change any more than you
can stop the suns from setting.”

Shmi Skywalker



If a man takes no thought about what is distant,
he will find sorrow near at hand.

Confucius



If a man takes no thought about:
what is distant?

Confucius

The Challenge



“We live in a world where change is exponential and we are helping to prepare students for jobs that don’t yet exist, using technologies that have not yet been invented, in order to solve problems that we don’t know are problems yet.

..we have a responsibility to prepare our students for a lifetime of uncertainty, change, challenge and emergent or self-created opportunity”.

Jackson N. in Arti Kumar, *Personal, Academic and Career Development in Higher Education* Routledge 2007 p. xi

Sustainable Development Goals

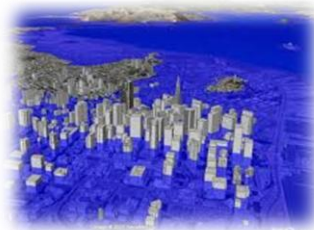




Globalisation



Migration



Climate change



Urbanisation



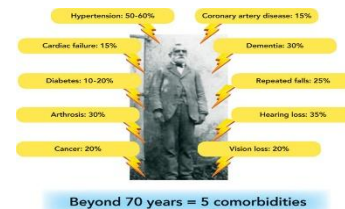
Ageing



Technology



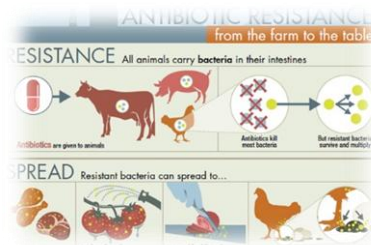
NCDs



Co-morbidity



New diseases



Antibiotic resistance

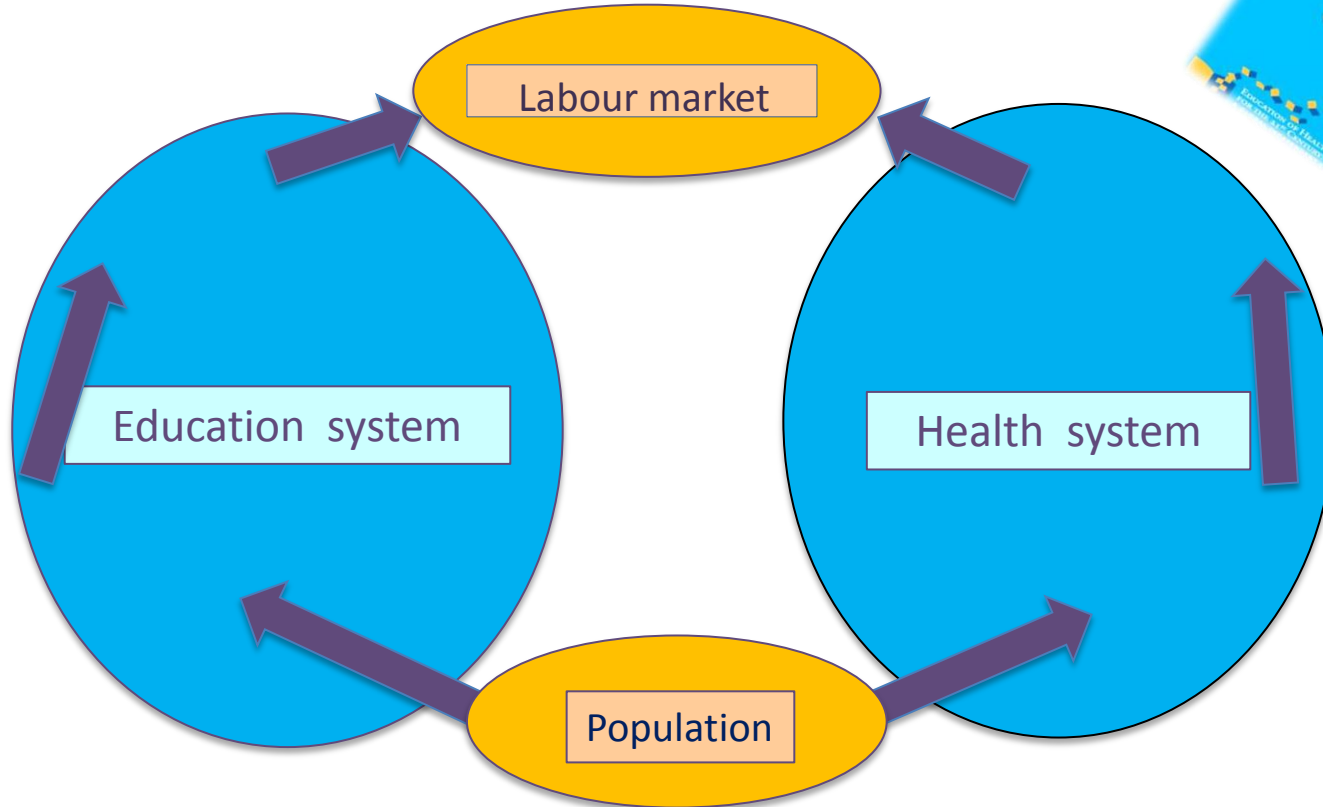


Citizen's voice

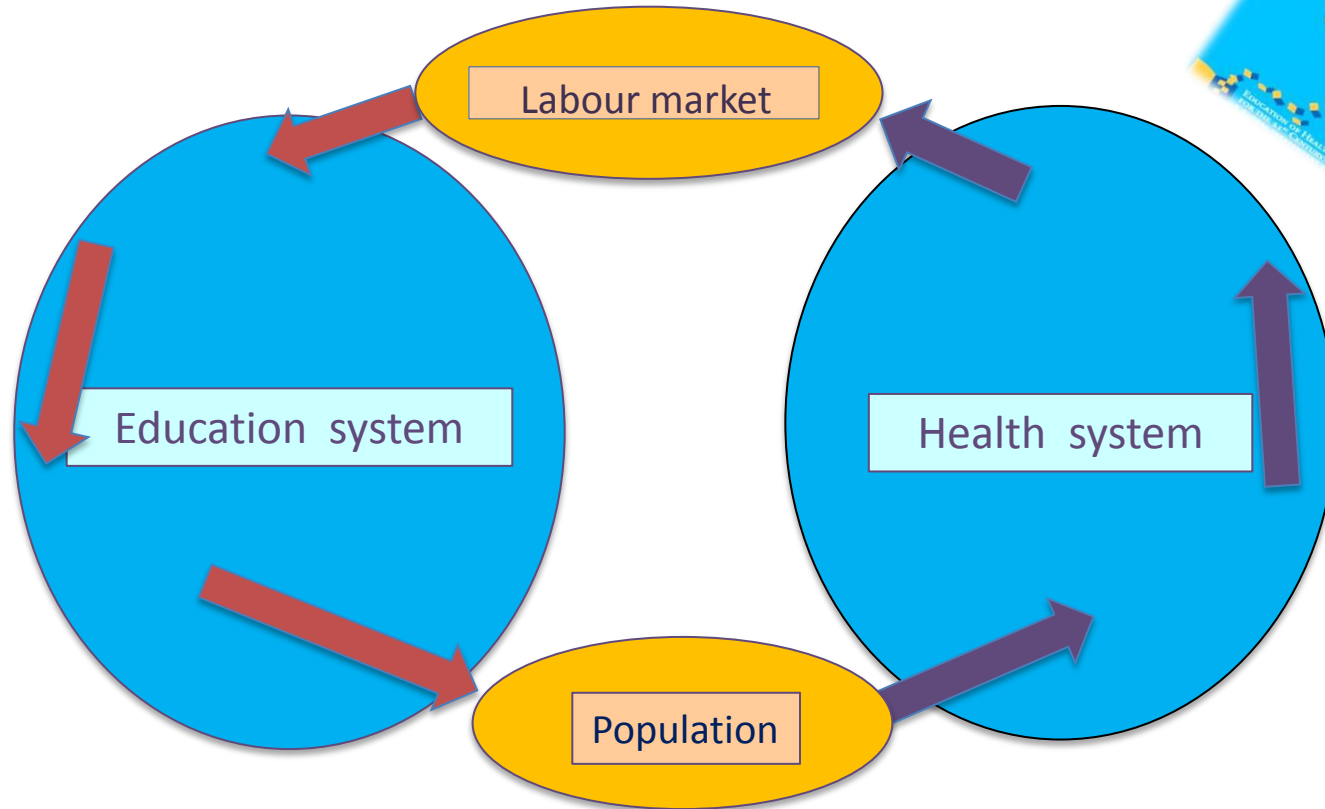


Rising costs

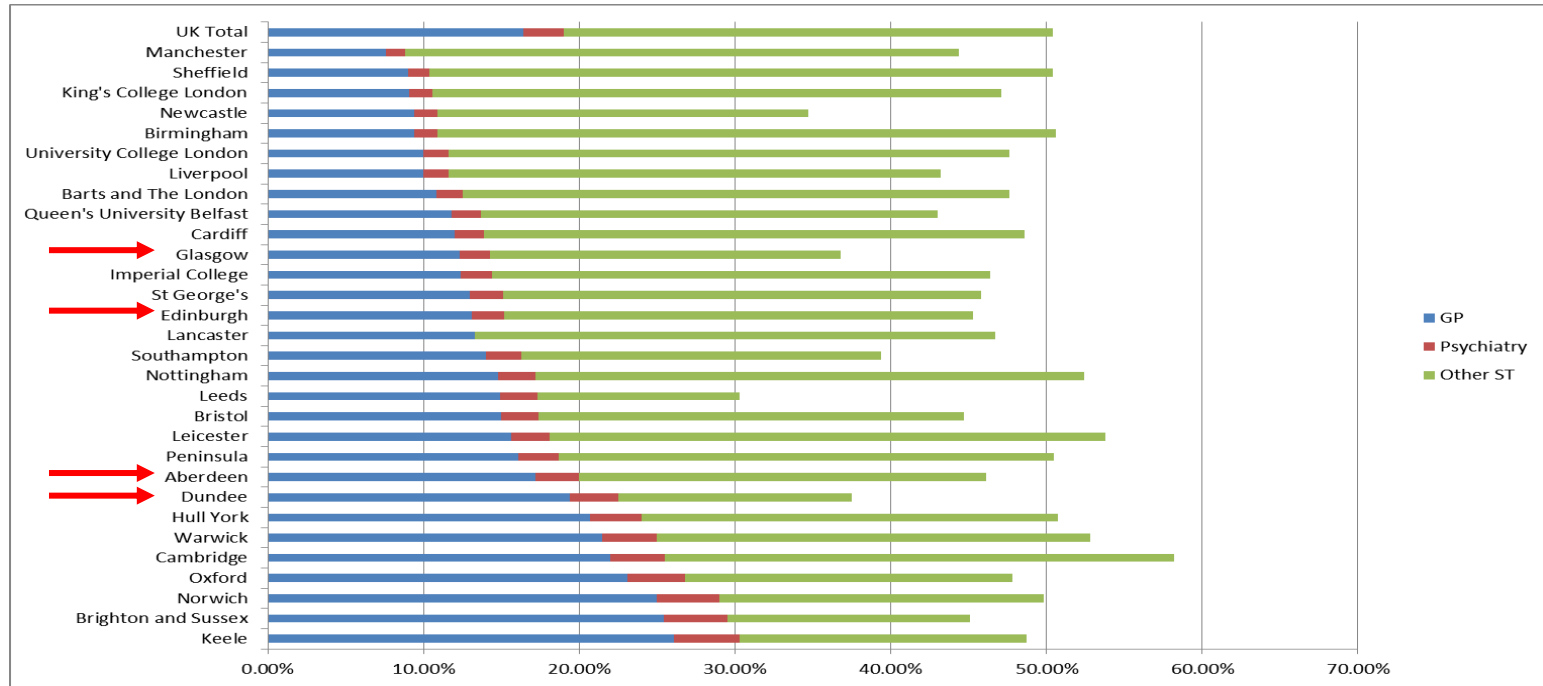
Health Professionals for a New Century



Health Professionals for a New Century



F2 destination survey 2016





Disruptive strategic innovation





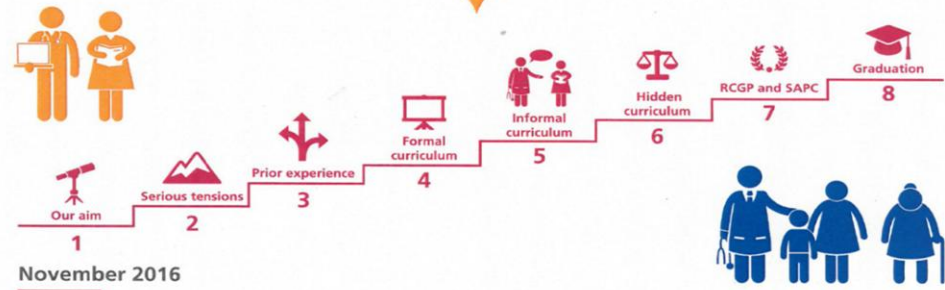
If a man takes no thought about what is distant,
he will find sorrow near at hand.

Confucius



By choice – not by chance

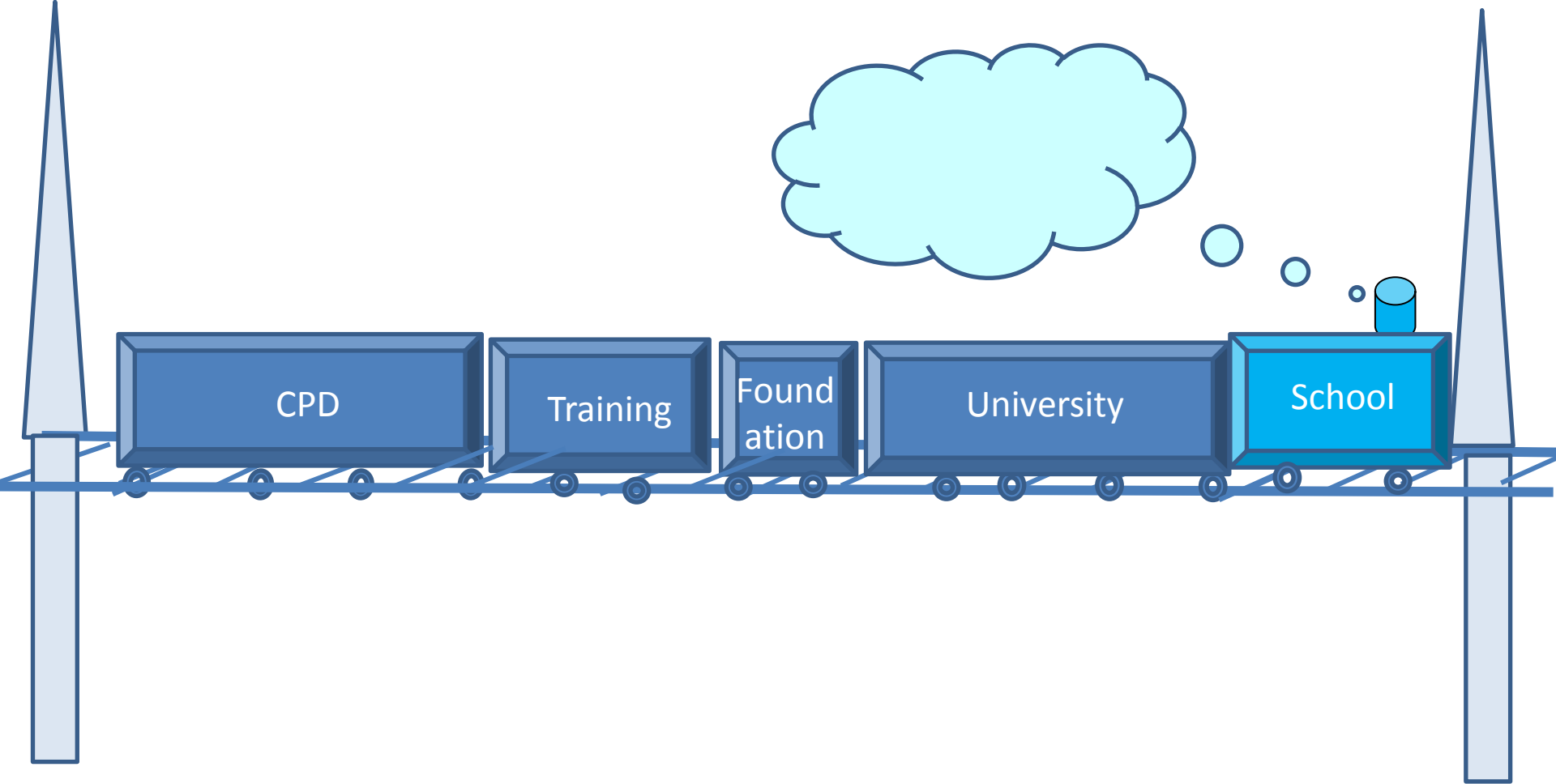
Supporting medical students towards future careers in general practice



[https://www.hee.nhs.uk/sites/default/files/documents/By%20choice%20not%20by%20chance%20web%](https://www.hee.nhs.uk/sites/default/files/documents/By%20choice%20not%20by%20chance%20web%20version.pdf)



Undergraduate versus postgraduate





Generalism versus specialism

“ Generalist knowledge is characterised by a perspective on the whole rather than the parts, on relationships and processes rather than components and facts; and on judicious, context-specific decisions on how and at what level (individual, family, system) to consider a problem”

Tricia Greenhalgh



“ GP/ family medicine is an academic and scientific discipline, with its own educational content, research, evidence base and clinical activity, and a clinical specialty orientated to primary care”.

European definition of GP 2011



Primary versus Secondary care

Avoiding speciality silos



Ever since civilised society began, we have felt the need to classify, categorise and specialise. It can make things more efficient, and help give the leaders of any organisation a sense of confidence that they have the right people focusing on the right tasks. But it can also be catastrophic, leading to tunnel vision and tribalism.

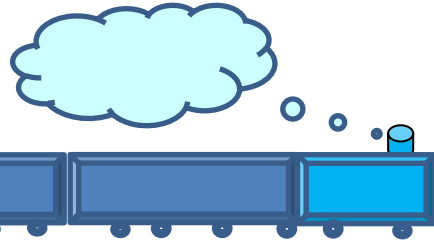
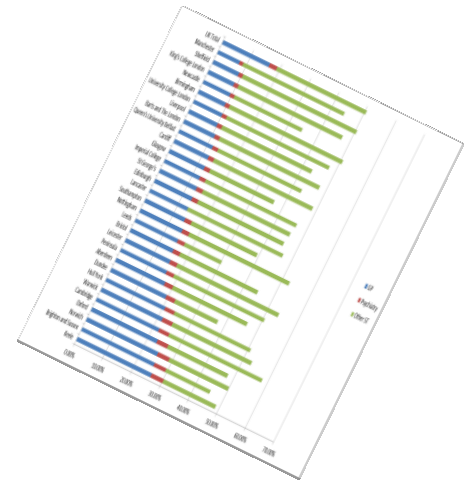
The Silo Effect: Gillian Tett



Social Class Divide

Widening participation





Why putting everything in its place
Isn't such a bright idea

**THE
SILO
EFFECT**

In the times of rapid change learners inherit the earth; while the learned find themselves beautifully equipped to deal with a world that no longer exists.

Eric Hoffer

